



Company : Beach Petroleum Ltd

Well : PeeJay-1

Interval : 106.00 - 1422.14 meters

Created : 23/Nov/2008 7:16:23 AM



INTEQ

FORMATION EVALUATION LOG

DRILLING PARAM		MD meters	Oil Show P F G	LITHOLOGY %	CORE	TOTAL GAS	CHROMATOGRAPH						Calimetry	Lithology Description																				
ROP (m/hr)						Total Gas (unit)	Methane ppm		Ethane ppm		Propane ppm				iso-Butane ppm		n-Butane ppm		iso-Pentane ppm		n-Pentane ppm													
200	160	120	80	40		100	200	300	400	500	0.1	10000	0.1	10000	0.1	10000	0.1	10000	0.1	10000	0.1	10000	0.1	10000	0.1	10000	0.1	10000	0.1	10000				
WEIGHT ON BIT (klbf)		10	20	30	40	50																												
RB1: 660mm (26") x 914mm (36") H/Opener Make: Reed Type: Rock/YC11 Jets: 3x22, 1x16 Depth In: 112.15m Depth Out: 218.0m Drilled 105.85m in 3.9hrs Grade: 1-1-NO-A-E-I-NO-TD		110																																
		120																																
		130																																
		140																																
		150																																
		160																																
		170																																
		180																																
		190																																
		200																																
WOB: 1-10 klbf RPM: 117-120																																		

RT MSL: 34.15mMDRT
 Water Depth: 78.00mMDRT
 RT Seabed: 112.15mMDRT

Spud PeeJay-1 @ 18:30 Hrs on 15/11/2008

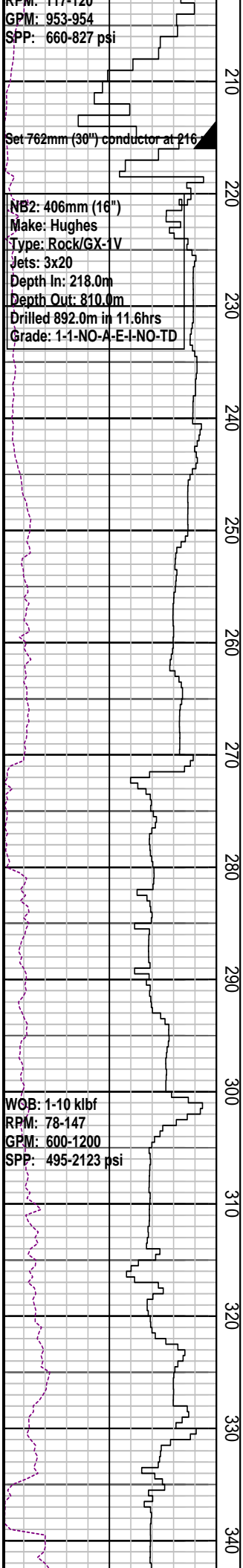
Drill with Seawater & Hi Vis sweeps.
 Returns to seabed 112.15m 810m

RPM: 117-120
GPM: 953-954
SPP: 660-827 psi

Set 762mm (30") conductor at 216

NB2: 406mm (16")
Make: Hughes
Type: Rock/GX-1V
Jets: 3x20
Depth In: 218.0m
Depth Out: 810.0m
Drilled 892.0m in 11.6hrs
Grade: 1-1-NO-A-E-I-NO-TD

WOB: 1-10 klbf
RPM: 78-147
GPM: 600-1200
SPP: 495-2123 psi



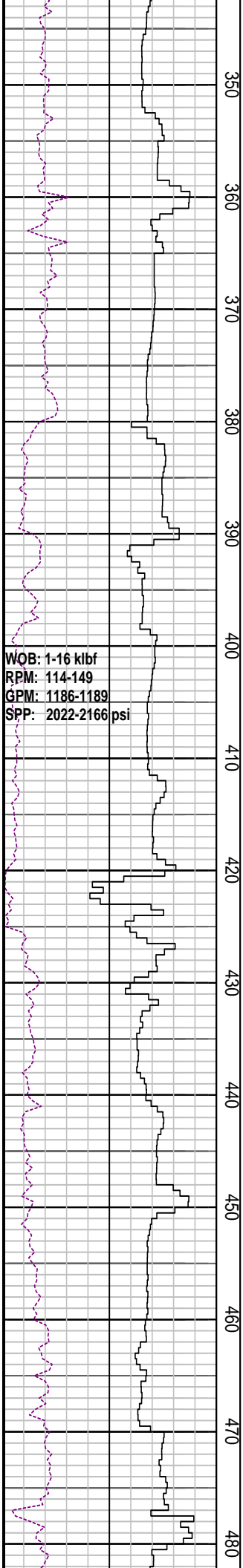
210
220
230
240
250
260
270
280
290
300
310
320
330
340

MD: 269.95, AZI: 150.86°
TVD: 264.9, Incl: 1.45°

MD: 294.47, AZI: 140.54°
TVD: 294.4, Incl: 1.15°

Drill with Seawater & Hi Vis sweeps.
Returns to seabed 112.15m - 810m

MD: 323.97, AZI: 150.84°
TVD: 323.9, Incl: 1.06°

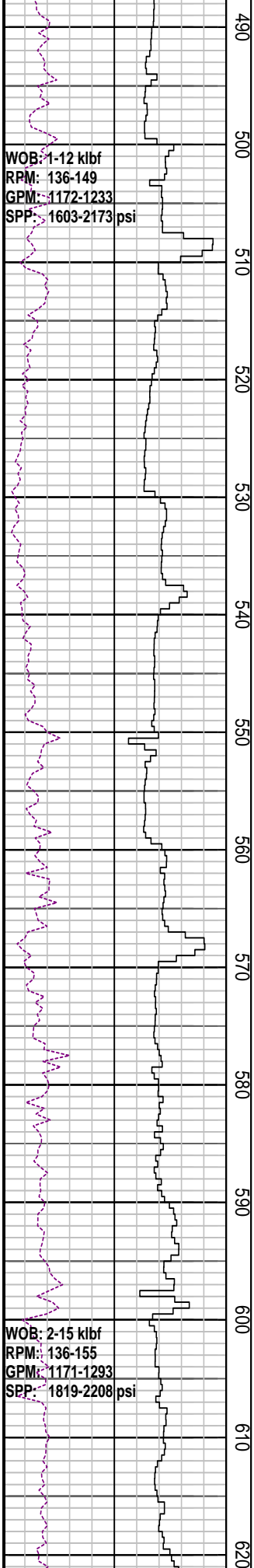


WOB: 1-16 klbf
RPM: 114-149
GPM: 1186-1189
SPP: 2022-2166 psi

Drill with Seawater & Hi Vis sweeps.
Returns to seabed 112.15m - 810m

MD: 413.38, AZI: 197.79°
TVD: 413.3, Incl: 0.46°

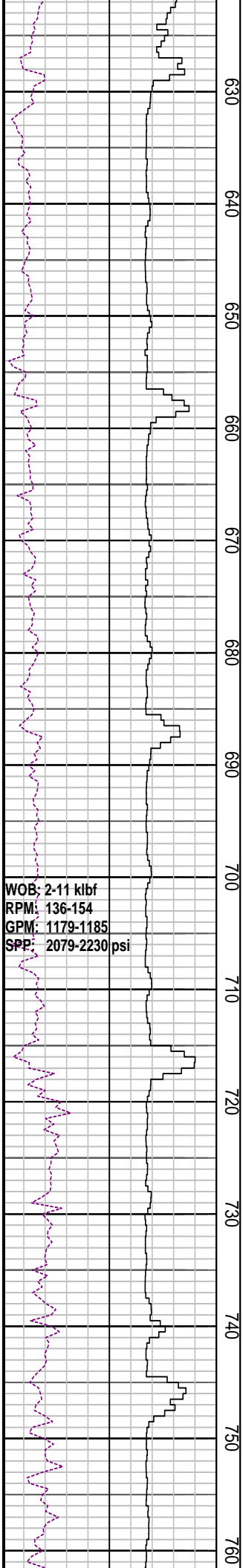
Drill with Seawater & Hi Vis sweeps.



MD: 502.18, AZI: 197.76°
TVD: 502.1, Incl: 0.23°

MD: 591.8, AZI: 226.93°
TVD: 591.7, Incl: 0.37°

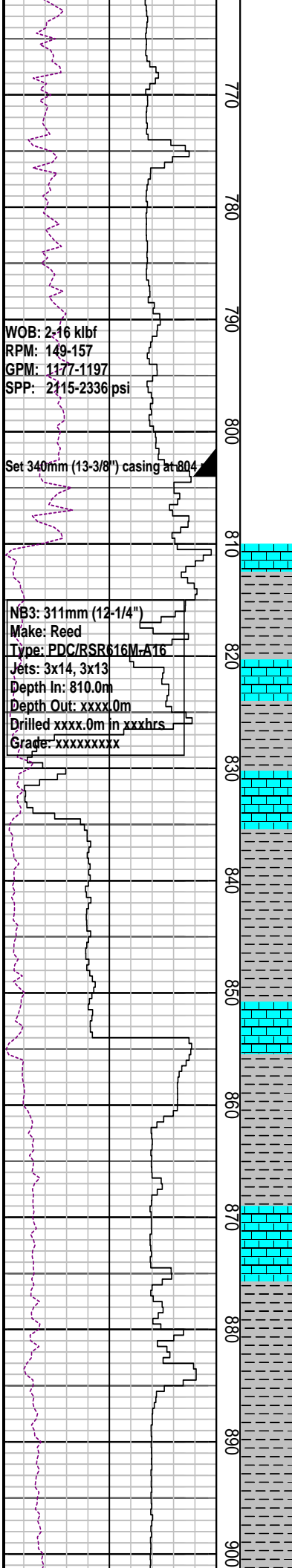
Drill with Seawater & Hi Vis sweeps.
Returns to seabed 112.15m - 810m



WOB: 2-11 klf
RPM: 136-154
GPM: 1179-1185
SPP: 2079-2230 psi

MD: 679.52, AZI: 321.43°
TVD: 679.5, Incl: 0.12°

Drill with Seawater & Hi Vis sweeps.
Returns to seabed 112.15m - 810m



MD: 768.28, AZI: 271.31°
 TVD: 768.2, Incl: 0.20°

Drill with Seawater & Hi Vis sweeps.
 Returns to seabed 112.15m - 810m

MD: 803.99, AZI: 236.85°
 TVD: 803.9, Incl: 0.21°

CLAYSTONE: lt bl gy, mod sft, ang f, wl srt, mod calc, Ls md mtrx, p vis por

LOT @ 813m with 8.8 ppg
 EMW: 15.55 ppg @ 928 psi

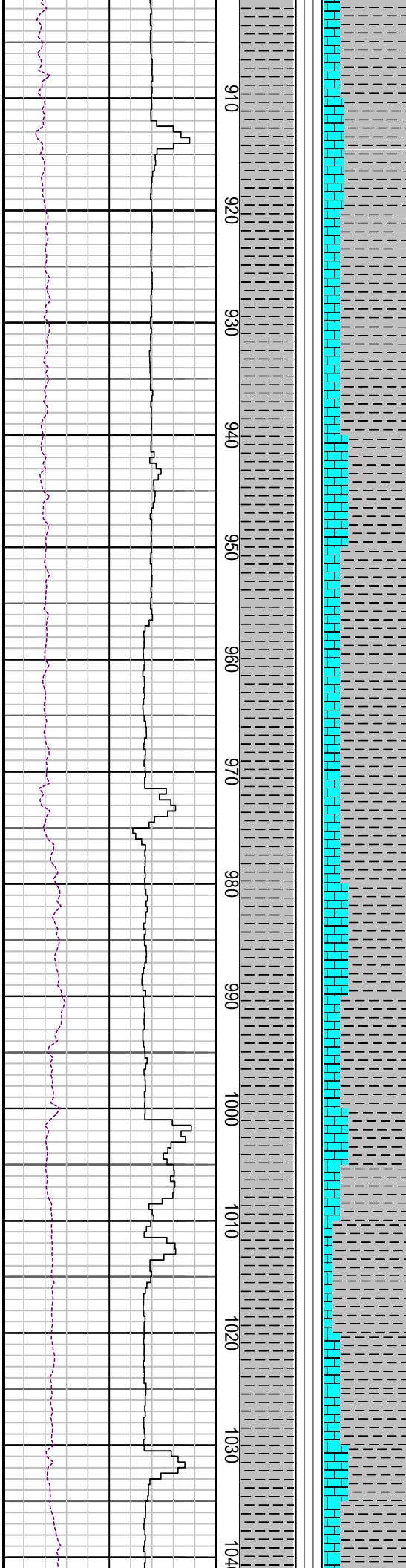
CLAYSTONE: lt bl gy, mod sft, ang f sli slit, p srt, mod calc, Ls md mtrx, p vis por

MD: 842.85, AZI: 127.38°
 TVD: 842.8, Incl: 0.43°

CLAYSTONE: lt bl gy, mod sft, ang f sli slit, p srt, mod calc cmt, Ls md mtrx, p vis por, tr nod pyr

LIMESTONE: gn gry- med bl gry, frm-m, micr, com-med calc spar, tr foss frag, tr cor, p por, n fluor

CLAYSTONE: med lo-dk gn, mod sft-frm, wl srt, tr pyr, tr foss



MD: 930.97, AZI: 102.94°
 TVD: 930.9, Incl: 0.44°

CLAYSTONE: med lo-dk gn, mod sft-frm, stky, wl srt, tr foss

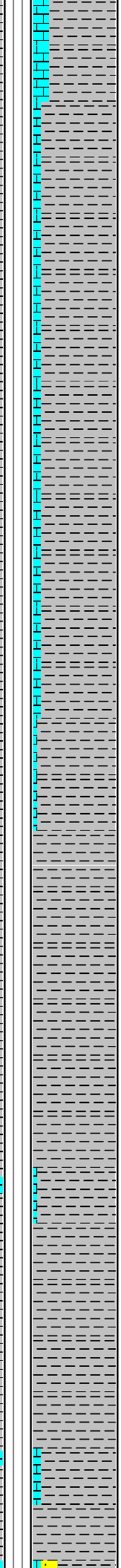
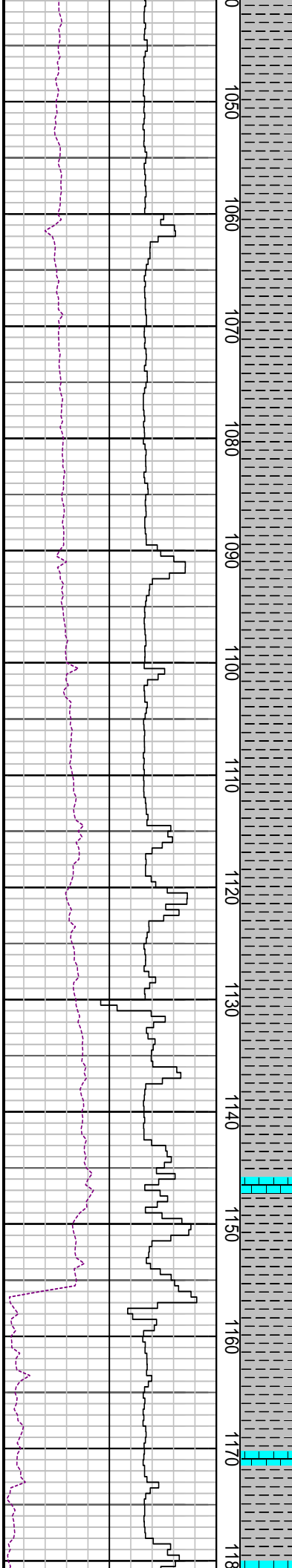
LIMESTONE: gn gry- med bl gry, frm-m, micr, com-med calc spar, tr foss frag, tr cor, p por, n fluor

CLAYSTONE: med lo-dk gn, mod sft-frm, wl srt, tr pyr, tr foss

CLAYSTONE: med lo-dk gn, mod sft-frm, wl srt, tr pyr, tr foss, tr glau

MD: 1019.59, AZI: 112.01°
 TVD: 1019.5, Incl: 0.43°

CLAYSTONE: med lo-dk gn, mod sft-frm, wl srt, tr pyr, tr foss, tr sst



MD: 1048.56, AZI: 126.08°
 TVD: 1048.5, Incl: 0.33°

CLAYSTONE: med lo-dk gn, mod sft-frm,
 wl srt, tr foss

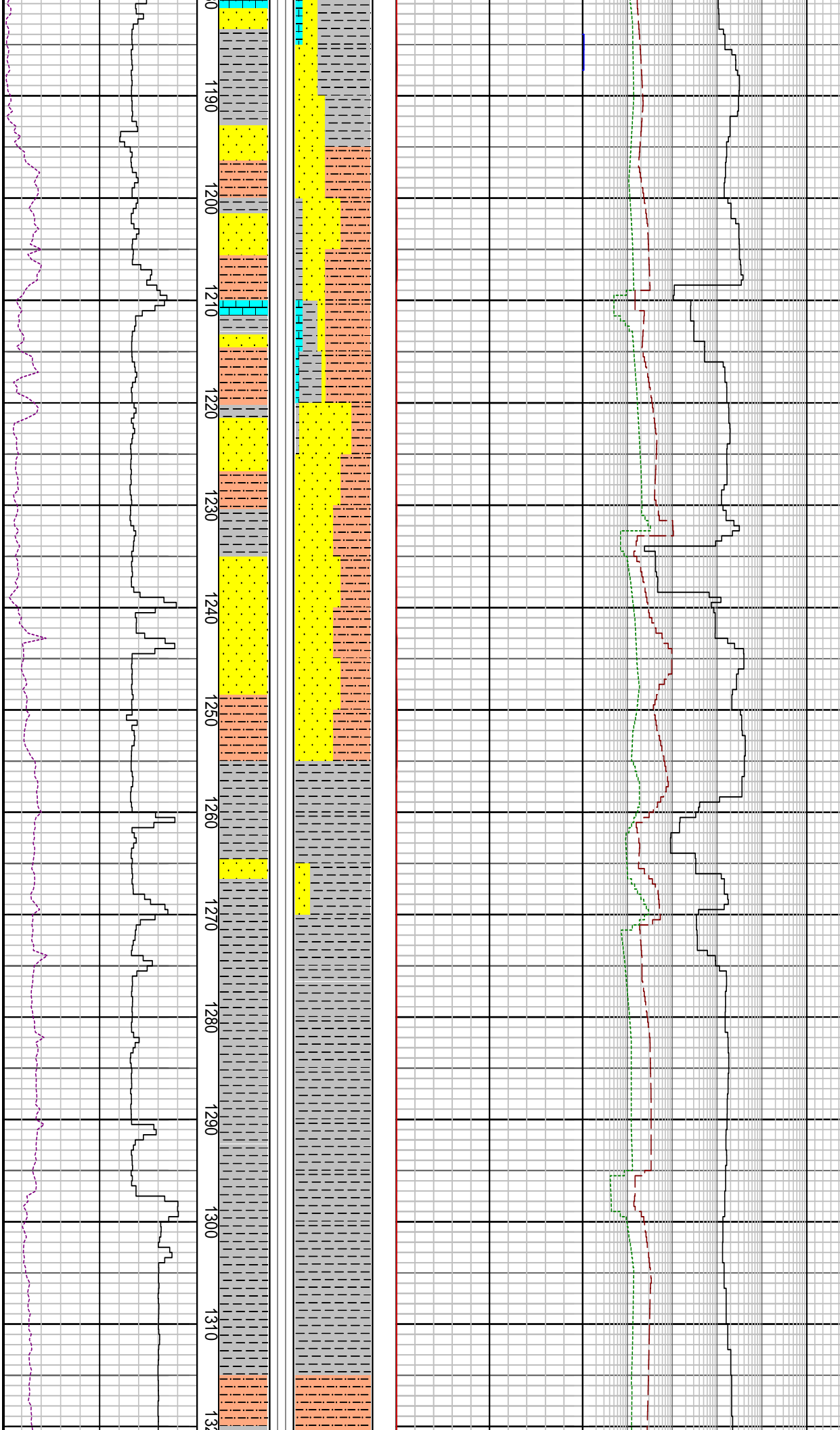
MD: 1108.49, AZI: 130.22°
 TVD: 1108.4, Incl: 0.33°

CLAYSTONE: olv gy- bn gy, sft-frm mod
 hd ip, sbblky-blky, tr pyr, tr v f carb mat,
 tr glau, tr cor

LIMESTONE: gn gry- med bl gry, frm-m,
 micr, com-med calc spar, tr foss frag, tr
 cor, p por, n fluor

CLAYSTONE: olv gy- bn gy, sft-frm mod
 hd ip, sbblky-blky, tr pyr, tr v f carb mat ,
 tr glau, tr cor, tr cht

CLAYSTONE: brn blk- olv blk, sft-frm
 mod hd ip, sbblky-blky, tr pyr, tr v f carb
 mat , tr cht



MD: 1167.38, AZI: 121.98°
 TVD: 1167.3, Incl: 0.22°

SANDSTONE : brn gy, trnsp-trnsl qtz gr,
 tr yel brn, stn dom f, md-crs, mod-wl srt,
 sbang-wl rddd, n vis cmt, mnr arg slit
 mtrx, fr inferred por

SILTSTONE: ol gy-md dk gy, v sli calc, r
 nod pyr, sbblyk grd to pyr

CLAYSTONE: brn gy-brn blk, sft frm
 mod hd ip, sbblyk-blky, tr pyr, tr v f carb
 mat, tr cht, tr sd

CLAYSTONE: brn gy-brn blk, sft frm
 mod hd ip, sbblyk-blky, tr v f carb mat,
 tr cht, tr foss frag, tr sd

SANDSTONE : brn gy, trnsp-trnsl qtz gr,
 tr yel brn, stn dom f, md-crs, mod-wl srt,
 sbang-wl rddd, n vis cmt, mnr arg slit
 mtrx, fr inferred por

CLAYSTONE: md dk gy-dk gy, v sli calc,
 mnr com pyr, sli slit, sft-plas sbblyk

MD: 1285.81, AZI: 61.10°
 TVD: 1285.8, Incl: 0.69°

SILTSTONE: md dk gy-dk gy, v sli calc,
 tr pyr, arg in pt, grd to Clst, sft to frm, tr
 plas, dom sbblyk

